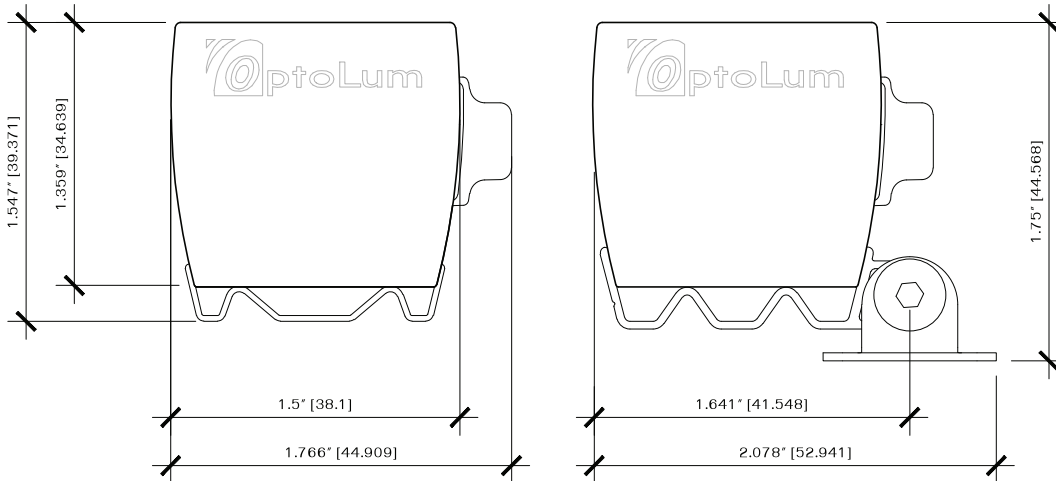


## Specify **OLL**

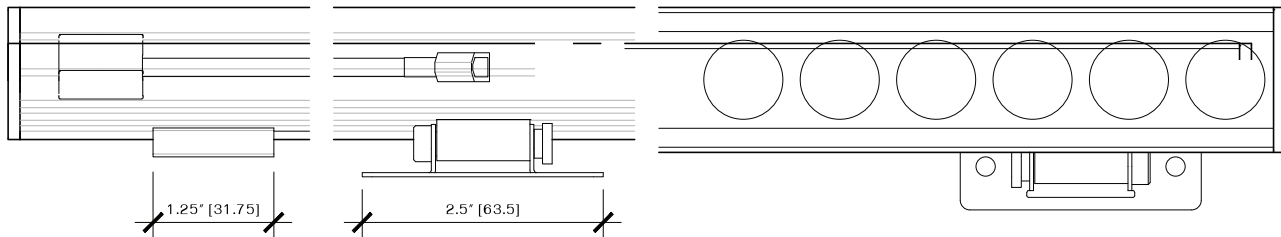
PRODUCT	MOUNTING	OPTIC	LED COLOR	COATING	LENS	FINISH	LENGTH
	<b>F</b> –Standard Fixed <b>R</b> –Rotation <b>P</b> –Suspended Pendant* <i>*Please coordinate pendant options with your OptoLum Rep.</i>	<b>8° 16°</b> <b>28° 40°</b> <b>UL(110°)</b> <b>EL(10°x50°)</b> <i>*Please coordinate alternating lens options with your OptoLum Rep.</i>	<b>Warm White</b> <b>27 – 2700°K</b> <b>30 – 3000°K</b> <b>35 – 3500°K</b> <b>40 – 4000°K*</b> <b>Cool White</b> <b>45 – 4500°K*</b> <b>50 – 5000°K*</b> <i>*special order color</i>	<b>U</b> –Uncoated <b>C</b> –Conformally Coated	<b>S</b> –Standard Lens <b>O</b> –Opal Lens <b>L</b> –Louver	<b>A</b> –Natural Clear <b>B</b> –Brite Natural* <b>C</b> –Black* <b>D</b> –Medium Bronze* <b>O</b> –Custom* <i>*Nonstandard finishes available for additional cost</i>	Specify in 3" multiples (120" max)

## Product Dimensions

### End Views Actual Size



### Side and Top Views 1/2 = 1



## Options

### Optics

OptoLum offers optional high efficiency optics in several beam spreads. Custom alternating beam spreads are also available. Custom filters and color gels can be added. Please coordinate these custom options with your OptoLum Rep.

### Finishes and Mounting Options

The standard OptoLine L aluminium housing comes with a natural anodized finish. Additional custom anodized finishes are available for an additional cost. OptoLine L may be specified with fixed mounting clips or with Pivot Bracket mounting clips. The Pivot Bracket allows the installer to set a custom fixture angle. A suspended pendant option is also available.

### Coating

An optional conformal coating may be specified. This coating is optically clear and is applied over the circuitry and LEDs prior to final assembly to add a degree of protection to the circuit from environmental elements.

### Control Systems

OptoLine L is compatible with most 0-10 dimming systems. All 0-10 interface devices and power supplies are ordered separately.

### Electrical

OptoLum Low Voltage LED luminaires require remote power supplies which, must be ordered separately. Each OptoLine fixture comes with one 3' lead. Please see reverse for electrical data.

Item	Specification	OLL
<b>Output*</b>	Lumens/ft	461
	Efficacy	49 Lm/W
	CRI	CRI 85 nominal
	Lumen Maintenance	50,000 hours with maintenance of 70% lumen output @25 °C
<b>Electrical**</b>	Input Voltage	24 VDC
	Power Consumption	9.5 W/ft maximum at steady state
<b>Control</b>	Dimming	Compatible with most 0-10 systems with an OptoLum 0-10 dimming interface
<b>Physical</b>	Dimensions	W 1.5" X H 1.55" X L 3" multiples, installed with fixed clip
	Housing	Extruded aluminum, anodized finish
	Lens	Polycarbonate
	Fixture connectors	One 3' lead with male connector
	Ambient Operating Temperature	-20 ° - 50 °C (-4 ° - 122 °F)
	Max fixture run length per power supply	10'-0" @ 96W 6'-0" @ 60W
<b>Certification and Safety</b>	Certification	UL, CE
	LED Class	Class 2 LED product
	Environment	Dry Location

\* Estimates have been included in the illumination data pending LM79 testing results; actual illumination may vary from these estimates.

\*\* Power consumption data does not include the power supply and may vary slightly.

### Lamp Life and Warranty

Average Rated Lamp Life is 50,000 hours. Lamp life is derived from a formula that includes known LED tolerance and actual stress applied. OptoLum warrants our products for three years from the date of purchase against manufacturing defects.

