

TYPE PROJECT FIRM DATE

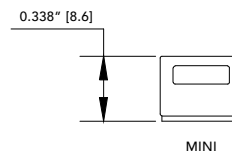
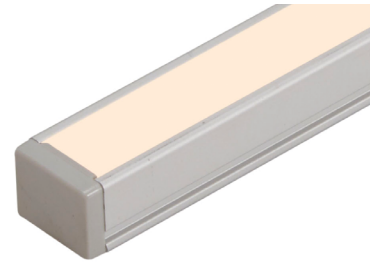
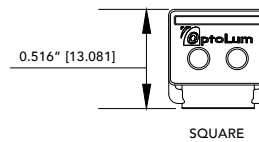
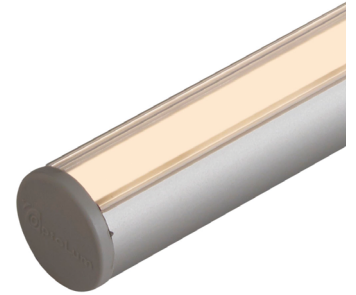
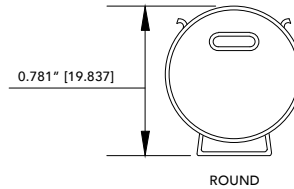
OPTOPRIME

Affordable Small Scale Linear



A select series of highly-efficient, dimmable products that are competitively priced and available to ship within 2 weeks* of an approved purchase order. OptoPrime is an ideal solution for cove, display and accent lighting projects. Applications include Retail, Hospitality, Museums, Office and Commercial spaces.

- + Ultra-small profile
- + High-Output LED Lighting
- + High CRI 90+
- + Available in 2700K, 3000K and 4000K
- + Available in 12" and 48" Lengths
- + 45°, 90° and magnetic mounting options
- + 3 Year Warranty



	OPTOPRIME
Lumen Output*	598 lm/ft
Power Consumption**	5.5 W/ft
Efficacy	108.7 lm/W
Input Voltage	24VDC
Uniformity	3-Step MacAdam Ellipse
Operating Temp	50°C (122°F) Max
Materials	Extruded Aluminum
Dimming	Flicker-Free down to 1%

* Orders less than 500 feet ship within two weeks of approved order
 * Data has been interpolated from the LM 79 testing of similar OPTOLUM products at 3000K and 90+ CRI, actual values may differ.
 ** Wattage is inclusive of power supply

ACTUAL SIZE COMPARISON

OPTOPRIME ORDERING CODE Example: OPR9---H--309--C--D-A-12

PRODUCT	MOUNTING	OUTPUT	COLOR TEMP	LENS	CONNECTION	FINISH	LENGTH
OPR OptoPrime Round	4 45° Angle Mount*	H HO	27 9 2700K*	S Standard (Clear)	D Dead End	A Natural	12 12"
OPS OptoPrime Square	9 90° Standard Mount*		30 9 3000K*	O Opal	E End to End		48 48"
OPM OptoPrime Mini	M Magnetic Mount* T Tape Mount* R Round Clip **		40 9 4000K*	L Line of Light***			

*Available only for SQUARE & MINI
 **Available only for ROUND
 *CRI 90+
 *** Available only for ROUND & SQUARE

OPTOPRIME ACCESSORIES ORDERING CODE Example: PS100W0-10V-1-2

	POWER SUPPLY	# OF LEADS
PS Power Supply	100W0-10V 96WMLV 40WLUTRON 96WLUTRON	1 2 3

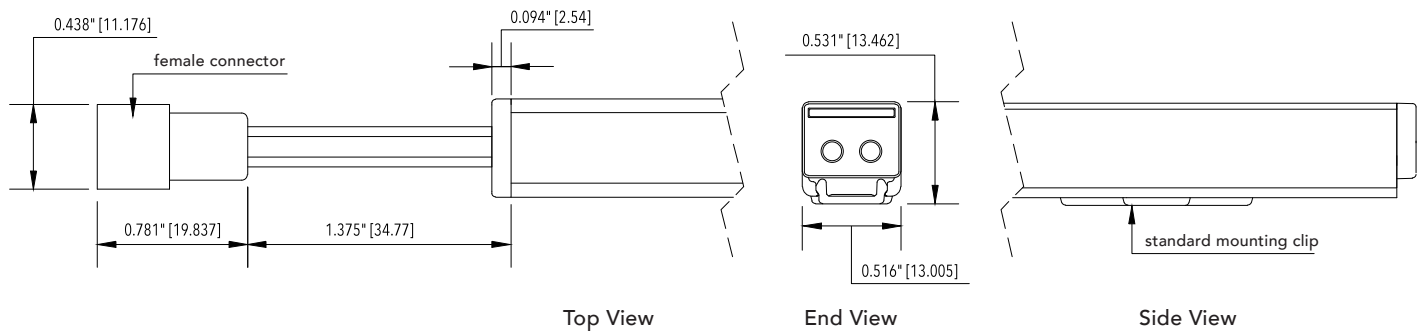
TYPE _____ PROJECT _____ FIRM _____ DATE _____

OPTOPRIME POWER SUPPLIES Complete information can be found on Power Supply Spec Pages

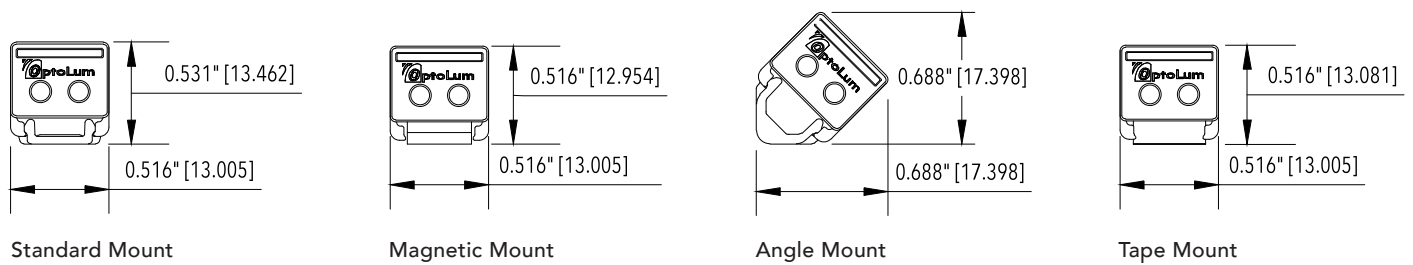
INPUT 110-277VAC RUN LENGTH PER SUPPLY*
 *Quantity of Power Supplies may change based upon layout.

0-10V	RATED POWER	MAX RUN LENGTH
PS 100W0-10V (INTEGRAL J-BOX)	100 W	18.0 ft (5.49 m)
MLV		
PS 96WMLV	RATED POWER	MAX RUN LENGTH
	96 W	17.4 ft (5.3 m)
LUTRON		
PS 96LUTRON	RATED POWER	MAX RUN LENGTH
– High Lume Premier; Compatible with EcoSystem 3 Wire Controls	96 W	17.4 ft (5.3 m)
PS 40LUTRON	RATED POWER	MAX RUN LENGTH
– High Lume EcoSystem/ 3 wire L3D J/Box	40 W	7.3 ft (2.23 m)

OPTOPRIME SQUARE PRODUCT DIMENSIONS DRAWINGS SHOWN AT ACTUAL SIZE

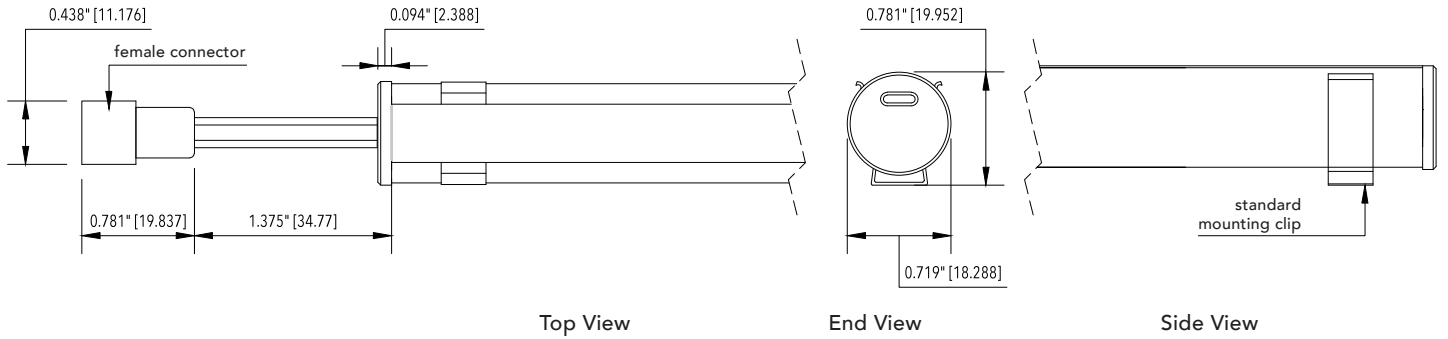


OPTOPRIME SQUARE MOUNTING DIMENSIONS DRAWINGS SHOWN AT ACTUAL SIZE

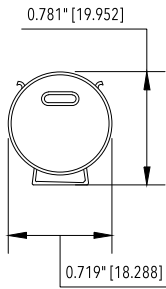


TYPE _____ PROJECT _____ FIRM _____ DATE _____

OPTOPRIME ROUND PRODUCT DIMENSIONS DRAWINGS SHOWN AT ACTUAL SIZE

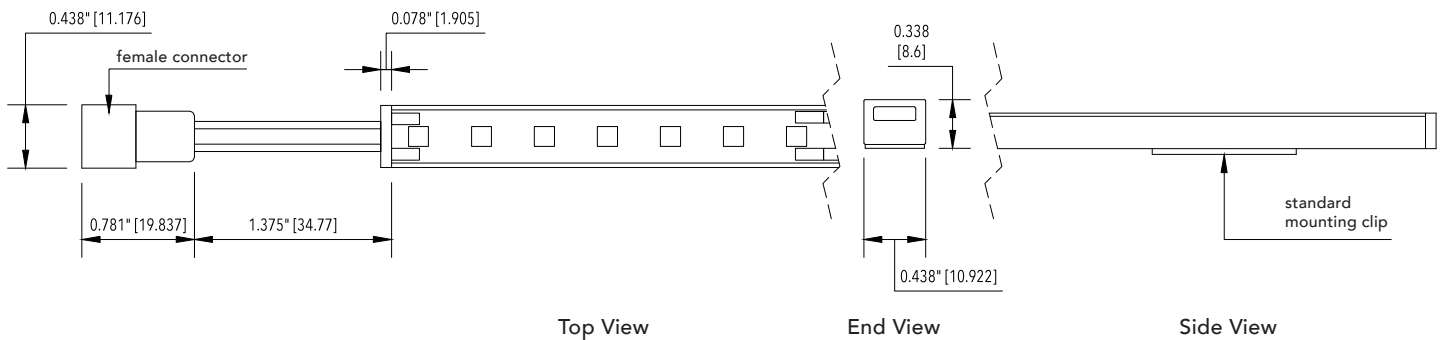


OPTOPRIME ROUND MOUNTING DIMENSIONS DRAWINGS SHOWN AT ACTUAL SIZE

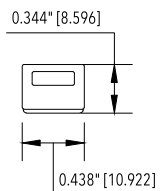


Round Clip Mount

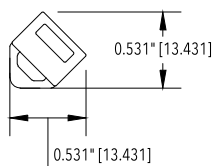
OPTOPRIME MINI PRODUCT DIMENSIONS DRAWINGS SHOWN AT ACTUAL SIZE



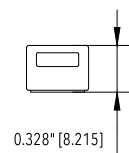
OPTOPRIME MINI MOUNTING DIMENSIONS DRAWINGS SHOWN AT ACTUAL SIZE



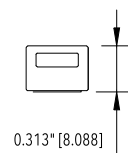
Standard Mount



Angle Mount



Tape Mount



Magnetic Mount